

The International Symposium on Open Access Acceleration



Sanyo-Onoda City
University

***Contributing to Regional Revitalization through Open Science and
Developing Advanced Talent for Research Data Utilization***

Date: Wednesday, March 5, 2025, 1:30 PM – 5:00 PM

Venue: Conference Room 1AB, Sanyo-Onoda Civic Activity Center
(A-Square, Chuo 2-3-1, Sanyo-Onoda City)

Participants: Open to the public (Hybrid format: in-person and online)

Application Method: Please apply by scanning the QR code on the right
or through the form (https://select-type.com/ev/?ev=cRDJjbS_KDE) .



[Program]

Opening Remarks

Ken Takeda, President, Sanyo-Onoda City University (SOCU)

Guest Greetings

Daisuke Doi, Director, Office for Science Information Infrastructure, Information Science and Technology

Division, Research Promotion Bureau, Ministry of Education, Culture, Sports, Science and Technology (MEXT)

Goji Fujita, Mayor, Sanyo-Onoda City

Peter Flannery, Councillor, Mayor, City of Moreton Bay, Australia

Report on Open Access Acceleration at Sanyo-Onoda City University

Noriko Shiomitsu, Advisor to the President, Designated Professor, SOCU

*“Building Research Information Management Systems, Enhancing Visibility of Research Outcomes, and
Promoting Industry-Academia-Government Collaboration”*

Keynote Speeches

Kazuhiro Hayashi, Director, Data-driven Policy Research Unit, NISTEP, MEXT

‘Multiple Impacts of Open Science for Innovation: Open Access, Research Data Sharing and Citizen Science’

Stephanie Bradbury, Manager, Scholarly Communications Services, Office for Scholarly Communication, QUT Library,
Queensland University of Technology, Australia

‘Open science: Research outputs and fostering collaboration at Queensland University of Technology’

Fumihiko Shimizu, Senior Manager, Global Research Partnership Department, Frontier & Open Innovation Division,
Mitsubishi Chemical Corporation

‘Corporate Strategies for Research Publications and Data Analysis: Open vs. Closed Innovation’

Panel Discussion and Floor Interaction

‘Regional Revitalization through Open Science and Talent Development for Research Data Utilization’

Panelists:

Robert Harvey, Professor in Pathophysiology, Associate Dean (Research), School of Health, University of Sunshine Coast,
Australia, and Keynote Speakers

Commentary:

Yuko Harayama, Executive Director, Yamaguchi University, Former Member of CSTI

Closing Remarks

Masahiko Ikekita, Chairperson, Board of Directors, SOCU

This symposium will be held as part of the “Open Access Acceleration Program” funded by the Ministry of Education,
Culture, Sports, Science and Technology of Japan (MEXT).

<Contact> Research Promotion Division, Sanyo-Onoda City University TEL : 0836-88-4533 MAIL : kenkyu@admin.socu.ac.jp

Daisuke Doi

Director, Office for Science Information Infrastructure, Research Promotion Bureau, Ministry of Education, Culture, Sports, Science and Technology (MEXT), Japan



He is working for advancing open access activities in universities under Japan's open access policy as well as supporting National Institute of Informatics (NII) to operate and develop the core research data platform of Japan "NII RDC."

Peter Flannery

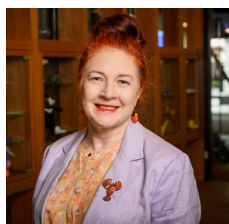
Councillor, Mayor, City of Moreton Bay, Australia



He has led the charge to put Moreton Bay on the map with a strategic deviation away from the traditional central CBD model, to create a network of linked business and residential areas known as a polycentric city. With a booming population, his key advocacy is for crucial connectivity networks and infrastructure across the City of Moreton Bay along with a mission to 'Go Green - As We Grow' by preserving 75% of land mass as green space and getting the balance right for development.

Stephanie Bradbury

Manager, Scholarly Communications Services, Office for Scholarly Communication, QUT Library, Queensland University of Technology, Australia



She is passionate about open science that aims to improve transparency and access to all aspects of the research process, particularly scholarly research outcomes. She is an advocate of cross-departmental collaboration to transform innovation and seamless service delivery.

Robert Harvey

Professor in Pathophysiology, Associate Dean (Research) School of Health, University of Sunshine Coast (UniSC), Australia



He has provided training to academics and PhD students on Open Access publishing at University College London and the University of the Sunshine Coast. He is Field Chief Editor of the Open Access journal *Frontiers in Molecular Neuroscience*, which also operates a transparent peer review system. His mission is to make science publications and data open access – so that scientists can collaborate and innovate, enabling them to deliver the solutions that will improve lives, communities and the environment.

Goji Fujita

Mayor, Sanyo-Onoda City, Japan



He is promoting digitalization through public-private partnerships in Sanyo-Onoda City to tackle regional challenges, improve citizens' quality of life, and enhance efficiency. Additionally, he is advancing a smart city initiative with the university to analyze and utilize data.

Kazuhiro Hayashi

Director, Data-driven Policy Research Unit, National Institute of Science and Technology Policy (NISTEP), MEXT, Japan



As an open science expert, he contributed to top-down consensus-building for global academic knowledge creation through projects under the G7 S&T Ministers' Meetings, OECD, and UNESCO, as well as to Japan's open access policy formulation.

Fumihiko Shimizu

SPSJ FELLOW, Senior Manager, Global Research Partnership Department, Frontier & Open Innovation Division, Mitsubishi Chemical Corporation, Japan



He has been at the forefront of olefin polymerization catalyst R&D. Leveraging advanced research databases and analytical tools, he conducts comprehensive analyses of global research endeavors to pinpoint premier collaboration partners.

Yuko Harayama

Executive Director, Yamaguchi University; Former Executive Member, Council for Science, Technology, and Innovation (CSTI), Cabinet Office, Japan



She is Professor Emeritus at Tohoku University, Secretary General of the GPAI (Global Partnership on Artificial Intelligence) Tokyo Expert Support Center, and a Member of the Board of Directors at Toray. Previously, she held leadership roles as Executive Director at RIKEN, Executive Member of CSTI at Japan's Cabinet Office, and Deputy Director of the Directorate for Science, Technology and Industry at the OECD. In 2011, she was awarded the Chevalier de la Légion d'Honneur and is a Foundation Fellow of the International Science Council.